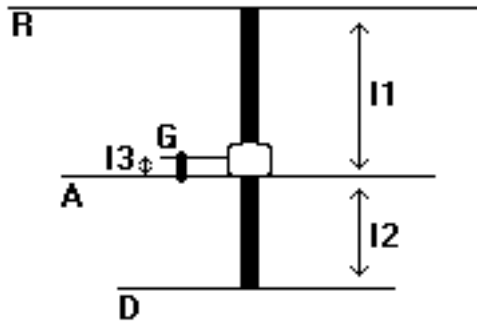


## 3 elements short YAGI

Centered round 103.6MHz, gain >7dB

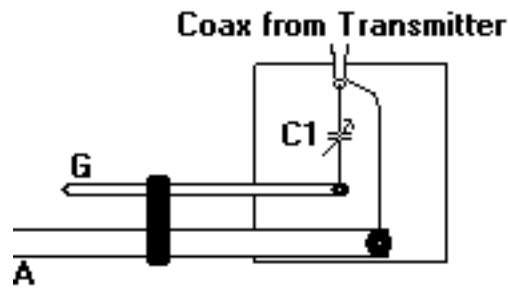
This layout came from **Radio Rediffusion (Jacco)** (P.O. Box 264, 2650AG Berkel en Rodenrijs, Netherlands), calculated for **Menace** (Delfgauw, Netherlands). The dimensions used in this schematic are based on a transmitter using the frequencies 103.40 - 104.20 MHz! As with all antenna's best performance is reached when the 'view' of the antenna is clear. This means that there must be no obstacles nearby the antenna. The picture at the right shows one 3 elements short YAGI (mounted at the top) build by **The Pulz** for **Radio Rav'olution**.



### Information & Dimensions:

What?	Length [cm]	Material	Diameter [mm]
R	144.8	aluminium	12
A	137.5	aluminium	12
D	131.8	aluminium	12
G	50.0	aluminium	10
BEAM	77.0	wood	200x200 square
I1	43.4		
I2	29.0		
I3	3.5		

A close up how to connect the coax coming from your transmitter to the antenna. The little black plate that connect the pipes **A** and **G** are two little metal plates (one on the top side, the other on the bottom side) holded together by a M4 screw. It's about 1.0[cm] wide and 4.0[cm] long.



What?	Value	Material
C1	30 [pF] trimmer	ceramic

Mount '**R**', '**A**' and '**D**' on the wooden beam with a screw and female screw! Adjust your SWR by first tune the trimmer (you see a little drop on your SWR-meter) then slide the little metal plates over '**G**' and '**A**' in horizontal direction until your SWR is dropped to less than 1:1.2! Then tune once again the 30 [pF] trimmer until you get the best result almost 1:1!